

THE VEIL OF MEMORY

ILLUMINATING
CARE





Ø1 INTRODUCTION

THE VEIL OF MEMORY

A journey through care, time, and reflection



The Veil of Memory: Illuminating Care

Care is an invisible thread woven through our lives—felt in gestures, objects, and memories passed between generations.

In this project, we sought to make care tangible, uncovering the objects our parents associate with giving or receiving care. Through interviews, we listened to their stories; through making, we gave those stories form.

The installation itself became a reflection on memory and presence. Objects, encased in acrylic, were revealed only by the movement of visitors, their shadows casting light on what would otherwise remain unseen. At the room's end, the voices of our parents played, their memories blending with our own.

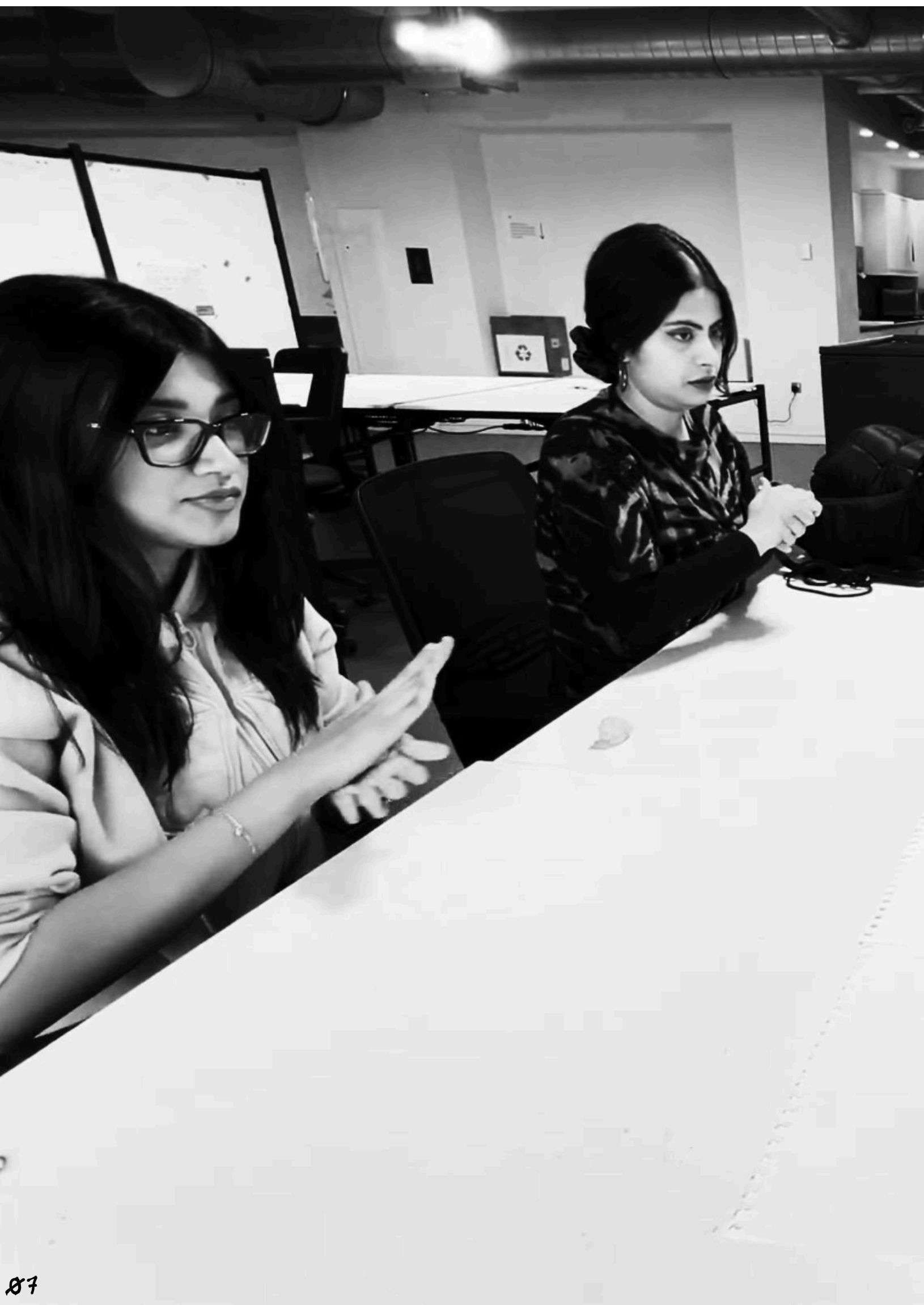
Are you standing in the past, present, or future? This zine captures our process, inspirations, and the moments of care that shaped our work—an exploration of what it means to hold, to remember, and to pass something on.



Ø2 COLLABORATION

THREADS OF COLLABORATION

Weaving Skills, Stories, and Care into a Shared Creative Process



The Veil of Memory: Illuminating Care

Our team came together from vastly different disciplines—design engineering, product design, sculpture, and digital direction—yet our collaboration felt incredibly natural from the start. We clicked instantly, not only in our creative thinking but also in how we worked together. Each of us brought unique skills to the table, and rather than dividing tasks rigidly, we embraced learning from one another. Whether it was exploring new workshop techniques, refining storytelling approaches, or problem-solving through material constraints, we pushed each other to expand our practices. This openness to experimentation and shared curiosity made the process both exciting and seamless.

One of our key strengths was our ability to plan effectively. From the outset, we knew we wanted to create something tangible and immersive, not just a concept. Our ambition required careful time management, especially as we navigated interviews, object-making, and exhibition design. We mapped out our timeline early and stuck to it, ensuring each stage—from ideation to fabrication—was given the attention it needed. Despite the tight schedule, we remained adaptable, iterating on ideas as they developed. The synergy within our group made even the more challenging moments feel enjoyable rather than stressful.





Beyond the project itself, what made this experience particularly special was the bond we formed as a team. Collaboration was not just about working efficiently; it was about trust, shared enthusiasm, and mutual respect. It rarely felt like work—it felt like building something meaningful with friends. This experience has reinforced the value of collective creativity, and it's something we hope to carry into future projects.



Ø3 INSPIRATIONS + INFLUENCES

The Veil of Memory: Illuminating Care

Our project was deeply inspired by the way memory and care intertwine, shaping our identities and relationships. Gerhard Richter's "Grey Mirror" influenced our approach to reflection—both literal and metaphorical. Just as Richter's work distorts and fragments perception, our installation plays with light and shadow to blur the boundaries of past and present. We wanted visitors to experience a similar sense of disorientation, questioning their place in time and memory as they navigate the space.



"Grey Mirror" – Gerhard Richter



We were also drawn to Petrit Halilaj's "Do You Realize There's a Rainbow Even if It's Night?", which reimagines personal and collective histories through physical objects. His ability to transform intimate narratives into immersive installations resonated with our goal of materializing care. Similarly, Bob and Roberta Smith's "Thamesmead Codex" informed our process of gathering stories and translating them into tangible artefacts. We saw our interviews as an act of preservation, turning fleeting memories into enduring forms.

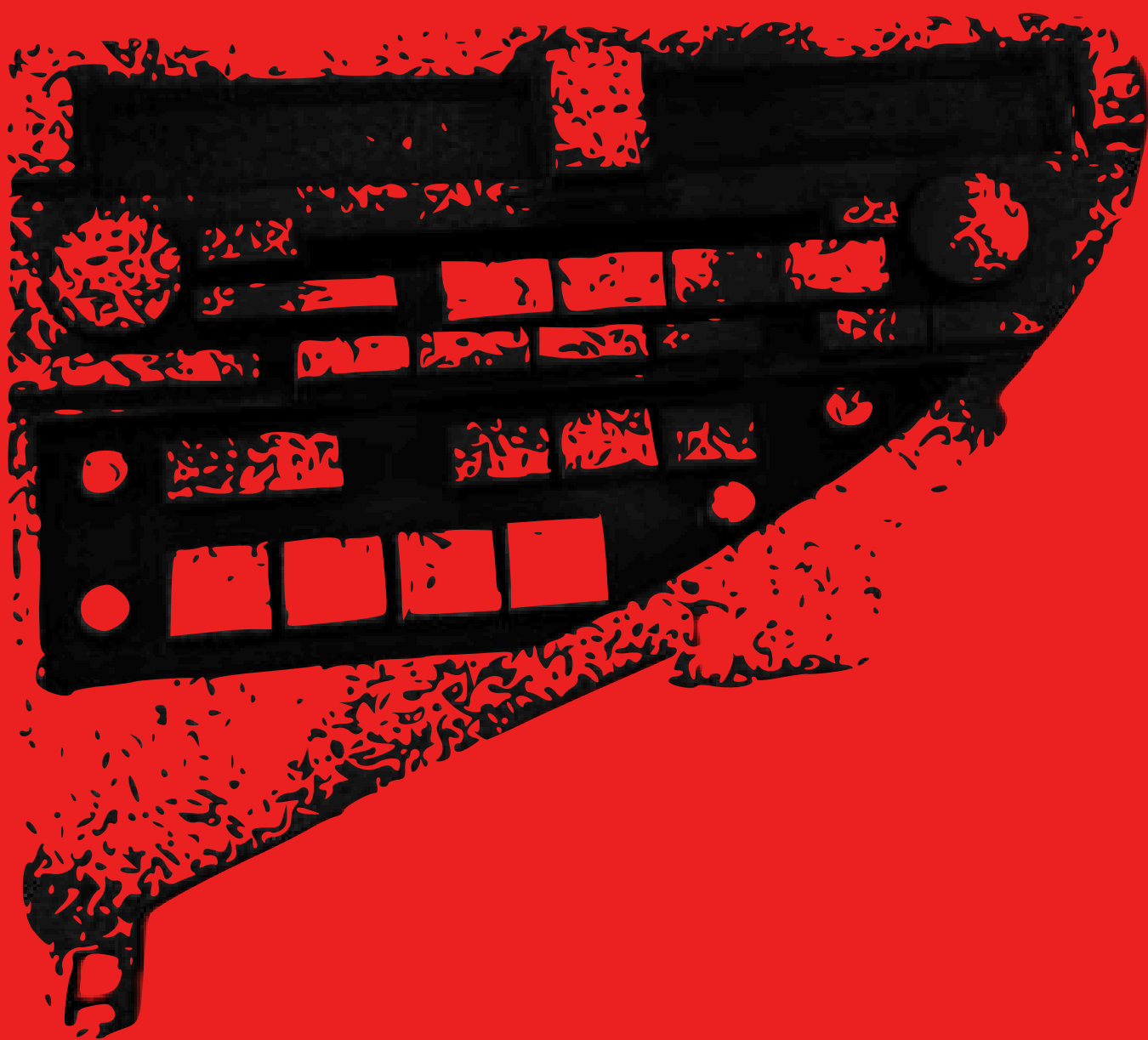


"Do You Realize There's a Rainbow Even if It's Night?" – Petrit Halilaj

Beyond art, our project was shaped by design and film. We considered how objects hold emotional weight, much like props in cinema, guiding viewers through a story. The decision to project light onto our acrylic-encased objects was not just a functional choice but a metaphor for care itself—an unseen force that only becomes visible through interaction. By merging these influences, we created an exhibition that invites people to reflect on their own experiences of care, memory, and time.



"Thamesmead Codex" - Bob + Roberta Smith



Ø4 OBJECTS OF CARE

CAR RADIO

The car radio became a quiet bridge between a father and his daughter—a constant presence in their daily routine. Amidst the morning traffic and the noise of the city, it played the songs she loved, filling the space between them. While he focused on the day ahead, she was immersed in music, shaping the soundtrack of their shared moments. Over time, that familiar station, once just background noise, became a reminder of their everyday ritual—a small, unspoken act of care, woven into the rhythm of their mornings together.

video







MANTI

Manti is more than just a dish—it is a gesture of care passed down through generations. From childhood visits to her grandparents, where they prepared it with love, to family gatherings where making manti became a shared ritual, it has always been a symbol of warmth and togetherness. Later, her mother continued this tradition, preparing it every time she returned home. Now, she carries it forward, dedicating the dish to those she cares for. In every fold and bite, manti holds the quiet, unspoken language of love—a way to nourish, to comfort, and to remember.

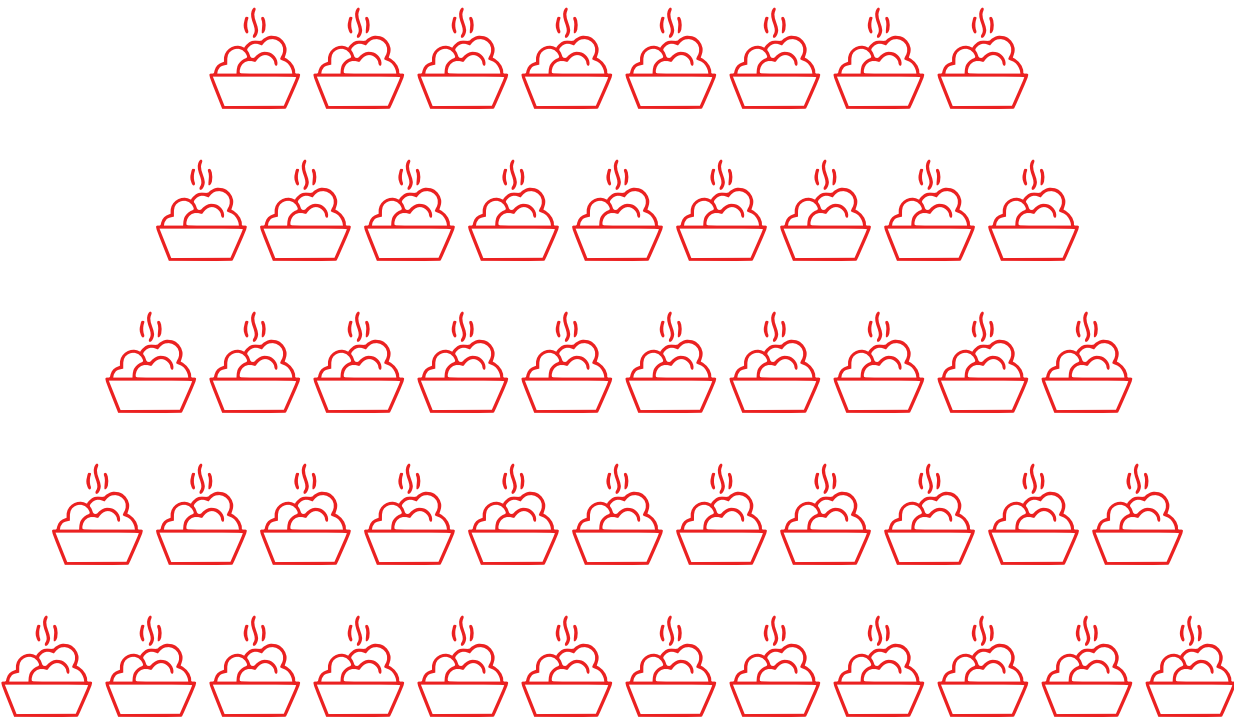
[video](#)



MASHED POTATOES

Mashed potatoes were a constant presence at every meal—a familiar, comforting staple that brought the family together around the table. A large bowl would always be there, warm and inviting, a quiet reminder of home and routine. Over time, things changed, and now they are reserved for special occasions, turning an everyday comfort into something nostalgic and cherished. But with each serving, the memory remains—of childhood dinners, of shared meals, of the simple but profound ways care is shown through food.

video



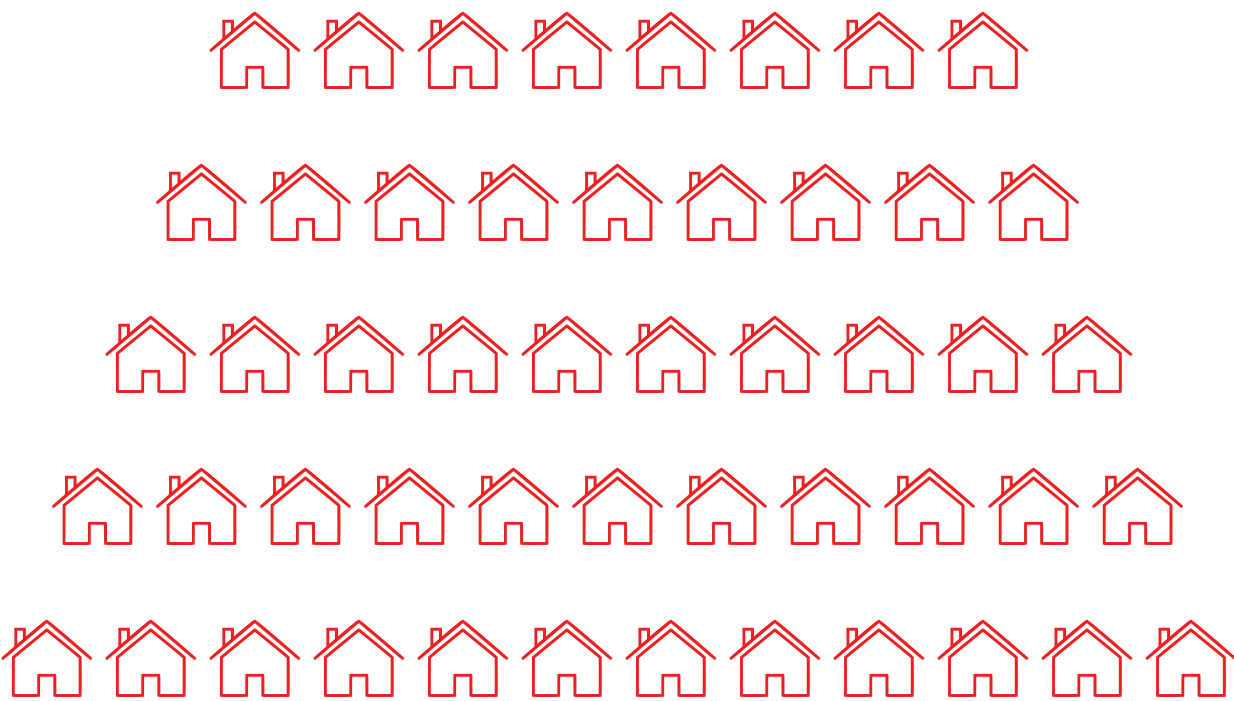




HOUSE

This house is more than just walls and a roof—it is a living memory, shaped by the hands of a father and filled with the echoes of a family growing within it. Every corner holds a story, every beam a reminder of love and care. It has been a constant, standing strong as generations have come and gone, a place where laughter, sorrow, and everyday life intertwine. Built not just with materials, but with intention and devotion, it remains a testament to the quiet, enduring ways care is embedded into the spaces we call home.

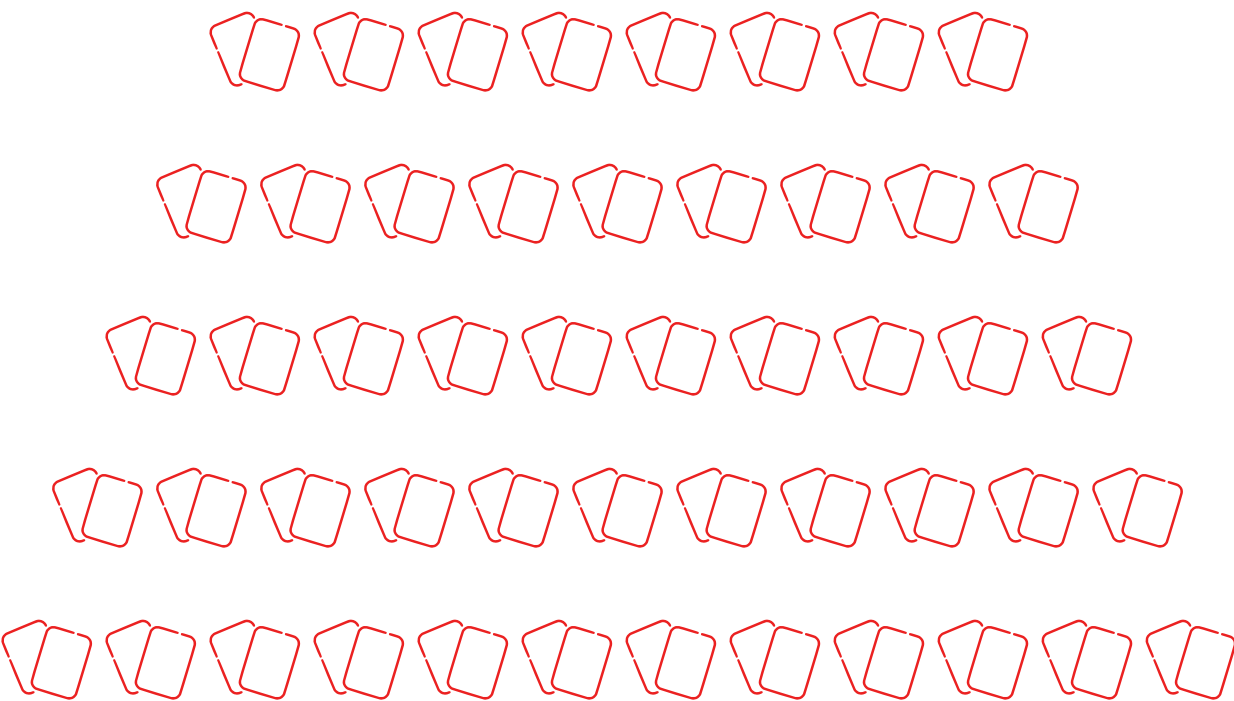
video



FAMILY CARD

She remembers the small card her father made the entire family carry—printed with their shared belief and motto. It was meant to be a symbol of love, care, and unity, a reminder of their bond no matter where they were. Yet, alongside its warmth, there was also an unspoken weight—a quiet sense of control woven into its meaning. It was a gesture both tender and firm, a reflection of care expressed through structure, a reminder of belonging that carried both comfort and expectation.

video







T-SHIRT

A well-worn t-shirt, full of small holes and softened by years of wear, remains his favorite piece of clothing around the house. His daughter often urges him to replace it, just as he once told his own father when he wore a similarly tattered shirt. At the time, he hadn't understood why his father held onto it, but now, faced with the same question, he simply repeats the words he once heard: "Because it gives me comfort." More than just an old garment, the shirt carries a quiet sense of familiarity, a reminder of care woven into everyday life.

video



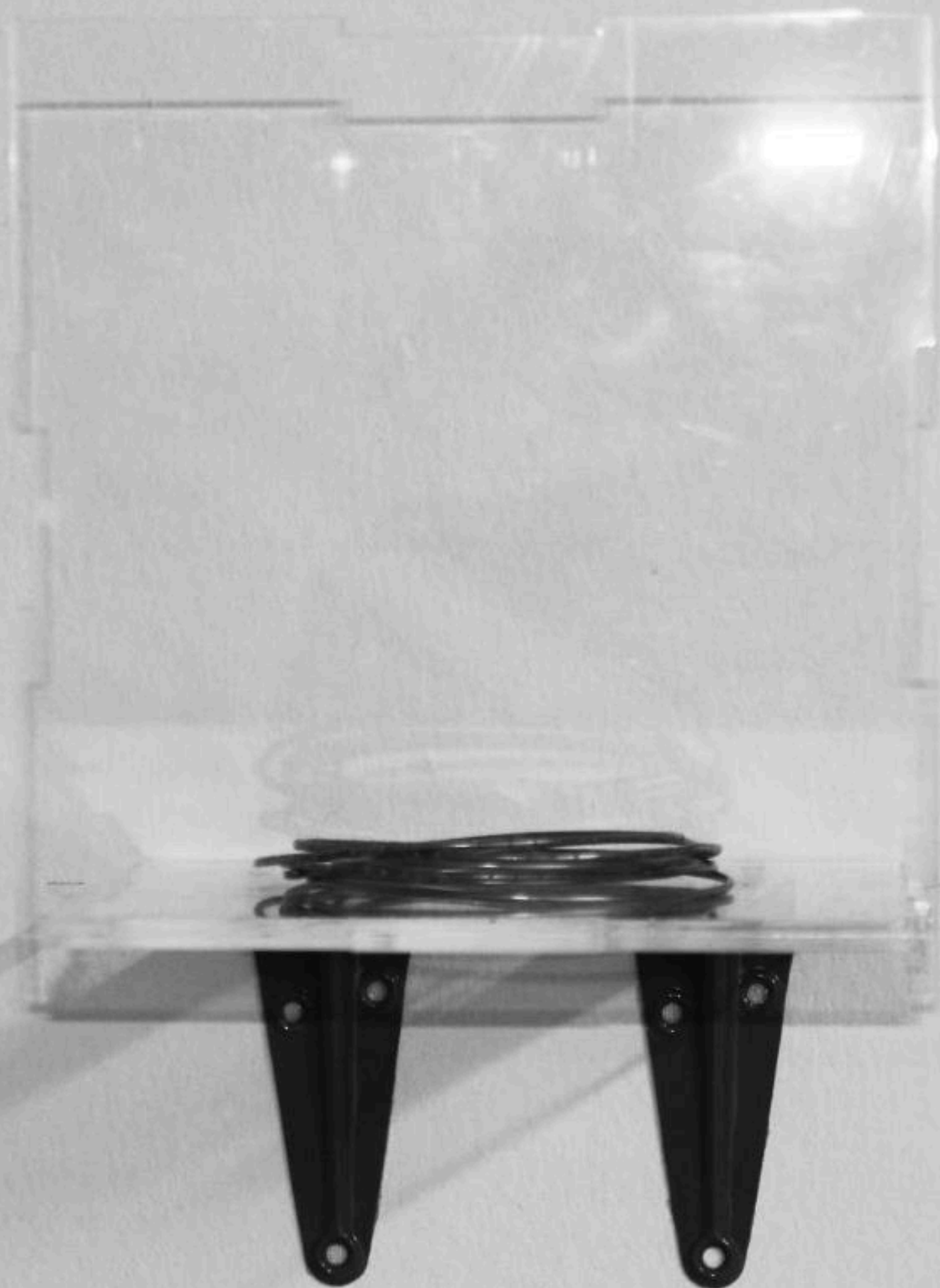
SAREE

A saree was once a symbol of longing, something she had wanted to drape around herself for years. But when it finally arrived, folded neatly in a parcel, it felt different. Her mother had begun letting go of her belongings, piece by piece, and this saree was one of them. It carried her touch, her years, her quiet goodbyes. Now, it sits in her wardrobe, untouched. She can't bring herself to wear it—not out of loss, but because it no longer feels like hers. It belongs to a time, a presence, that she's not ready to unravel.

video



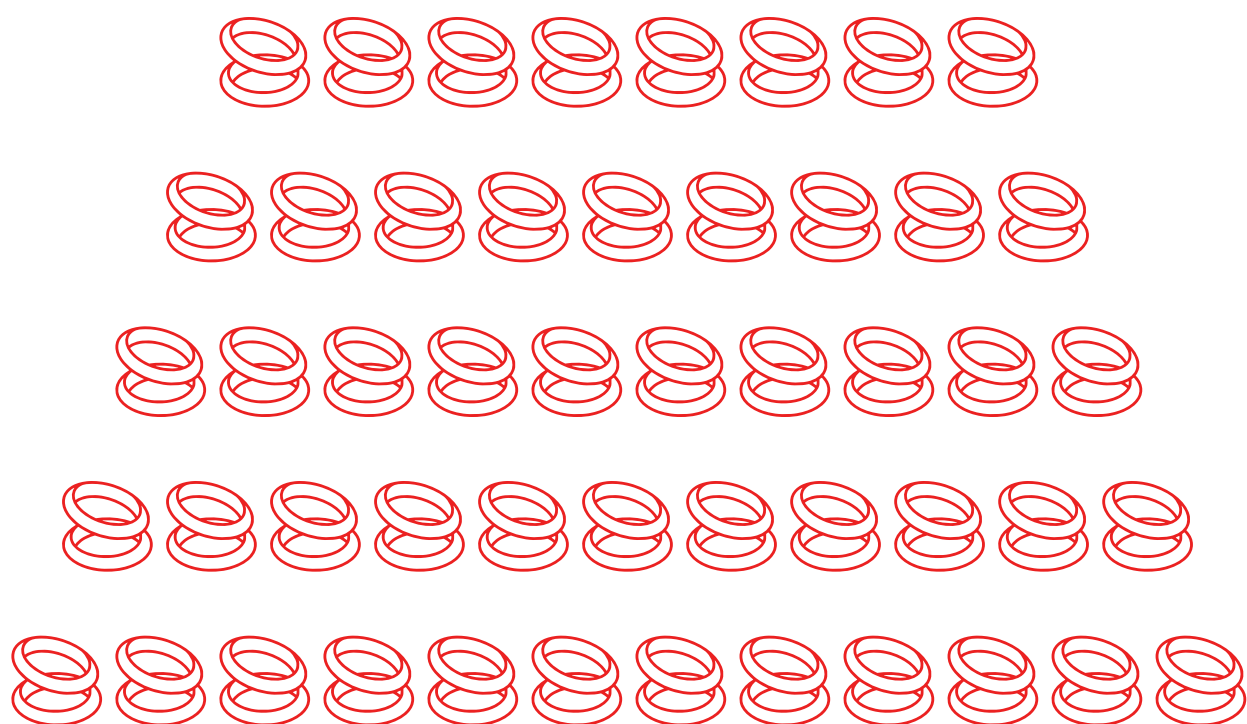


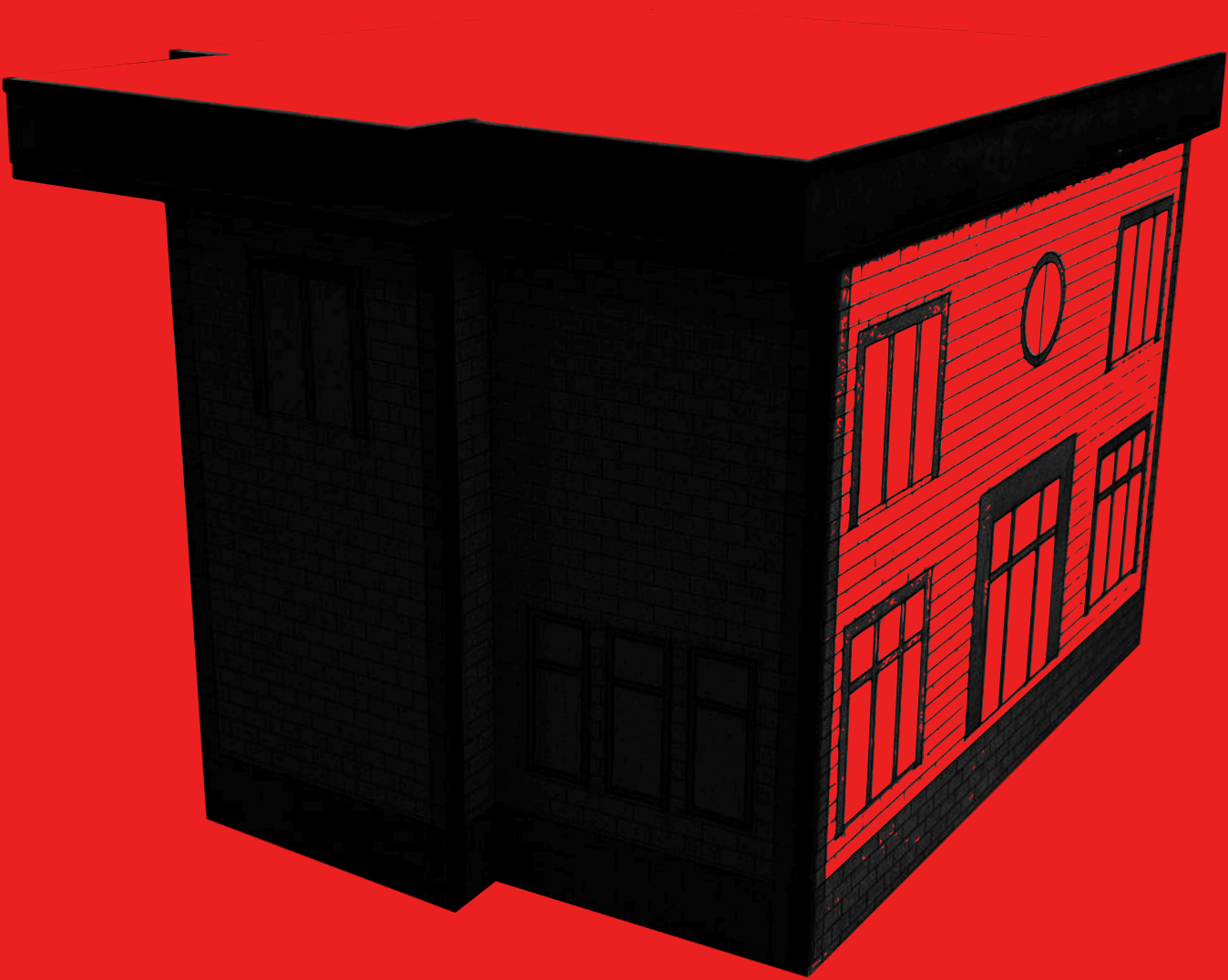


BANGLES

The bangles on her wrist carry the weight of care—silent witnesses to the years spent supporting her parents in their final days. Bent out of shape from bearing their weight, they hold an imprint of love, resilience, and loss. To others, they may seem unchanged, but to her, they are a quiet testament to the strain, the moments of holding on, and the grief that lingers. She could have them repaired, but she never would. Their imperfections are a reflection of the bond they shared—changed, but never forgotten.

video

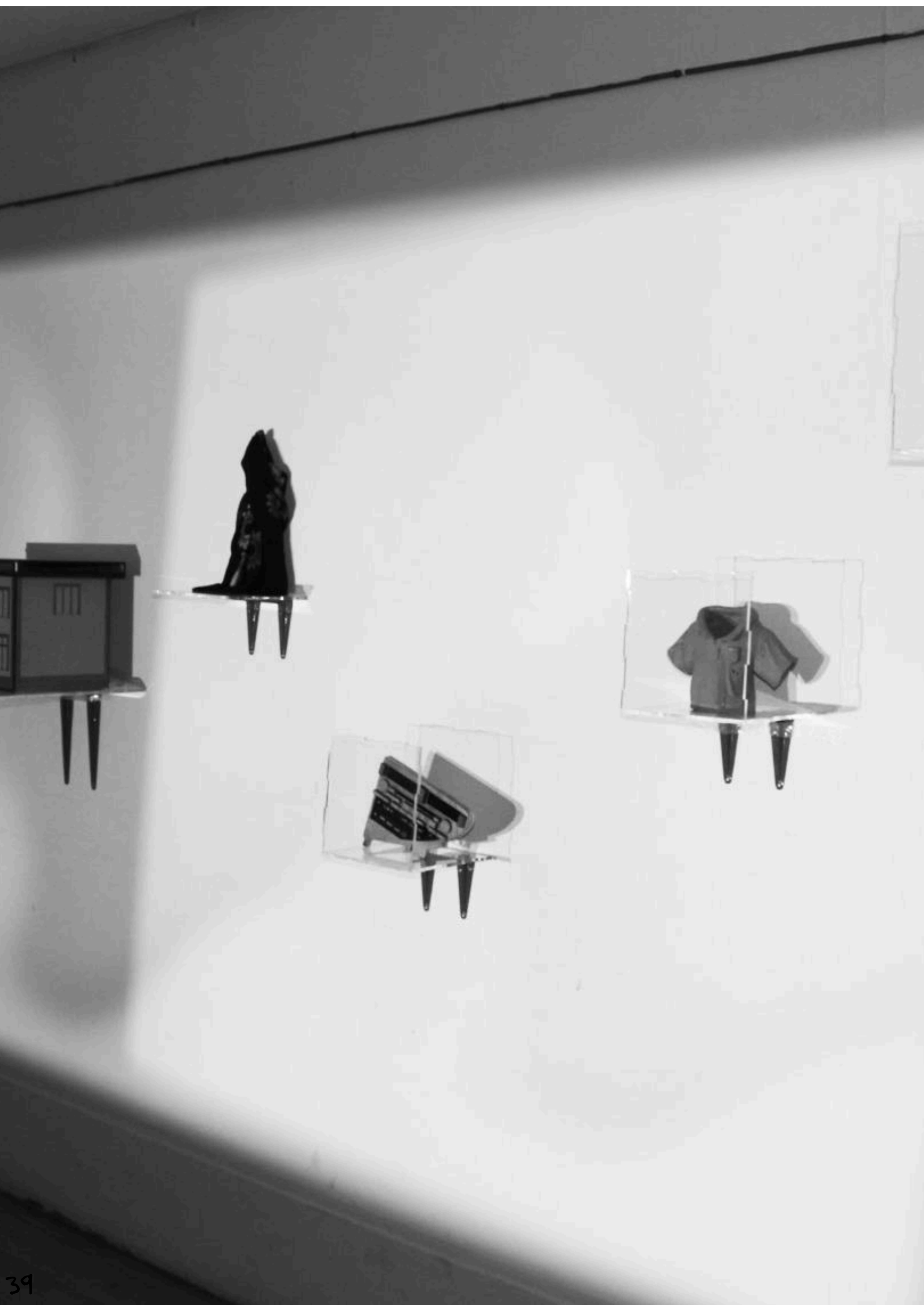




05 THE EXHIBITION

THE VEIL OF MEMORY

Illuminating Care

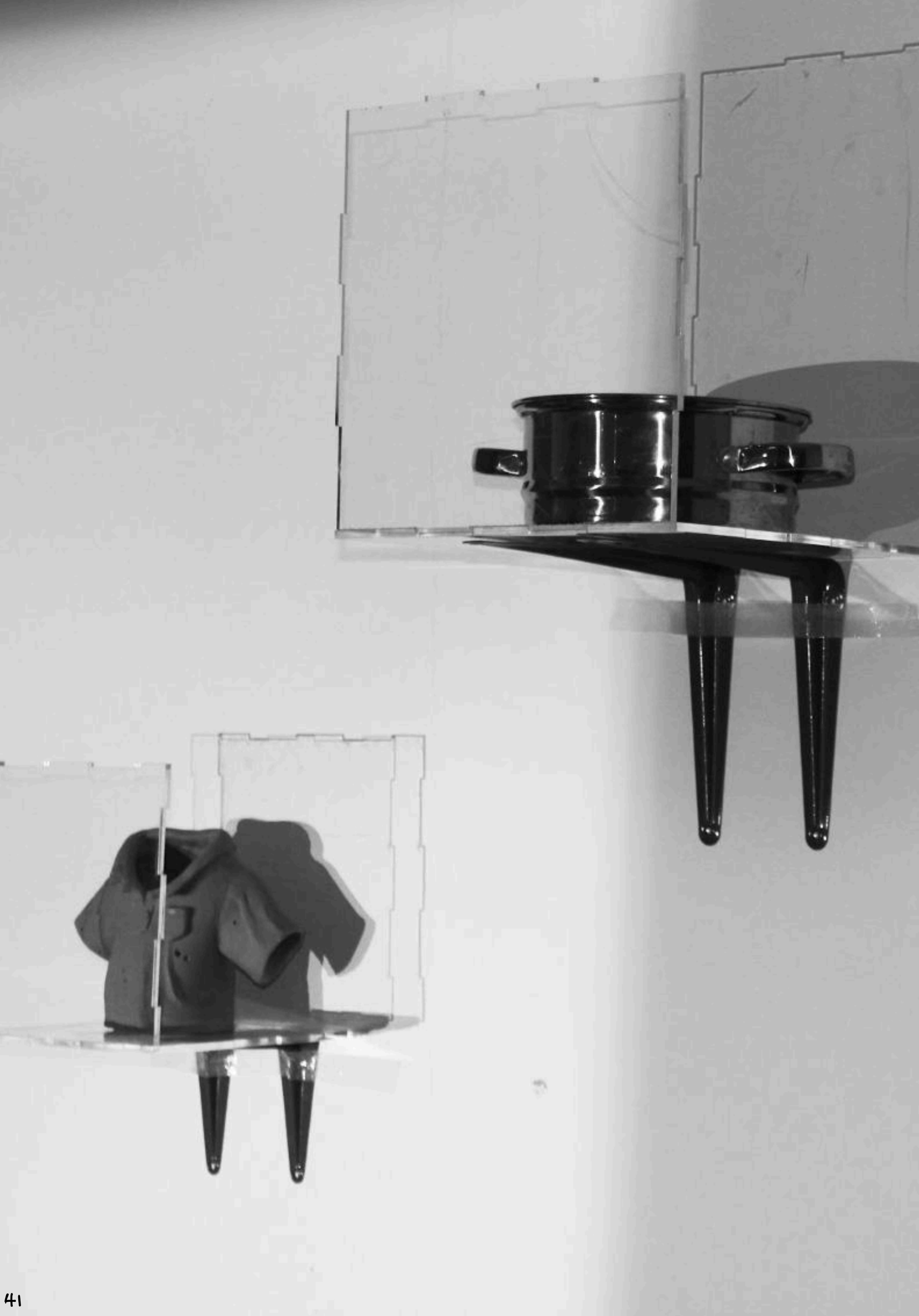


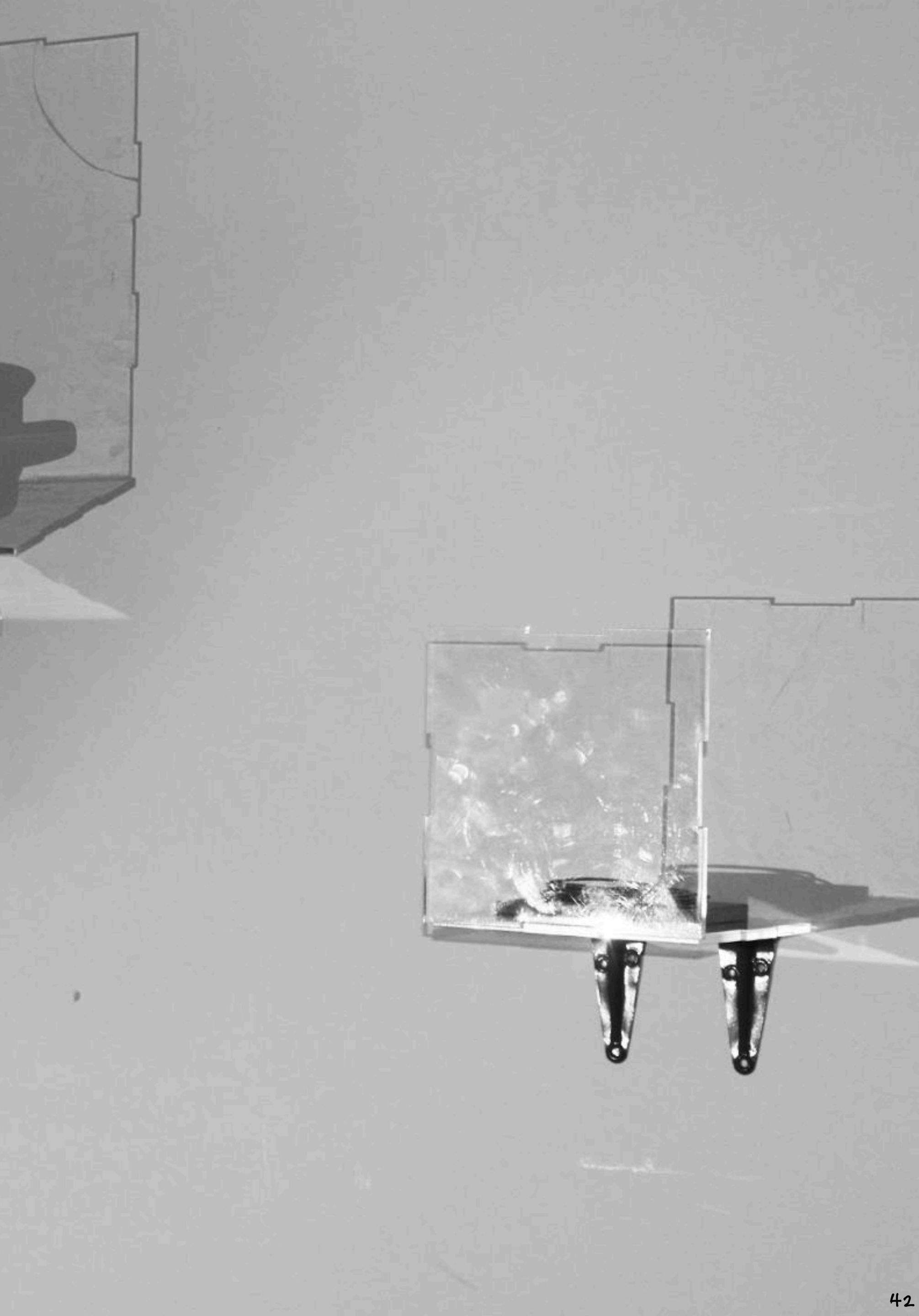
The Veil of Memory: Illuminating Care

The exhibition was designed as a space where memory and presence intertwine. Objects recreated from our parents' stories were encased in acrylic boxes, suspended on the walls like artifacts of personal history. A projector cast light across the room, illuminating the opposite wall with shifting shadows. As visitors walked through, their silhouettes became an active part of the installation, revealing the objects in fleeting moments. This interplay between presence and absence mirrored the way memories surface—sometimes clear, sometimes obscured, but always shaped by those who move through them.

At the end of the room, a screen played the interview videos, interweaving voices, hands in motion, and the act of making. The sound of stories filled the space, grounding the objects in the experiences they represented. A small zine accompanied the exhibition, offering visitors a tangible piece of the project to take with them. Through this immersive experience, the installation invited reflection on how care is remembered, held, and passed on—through objects, gestures, and the spaces we share.

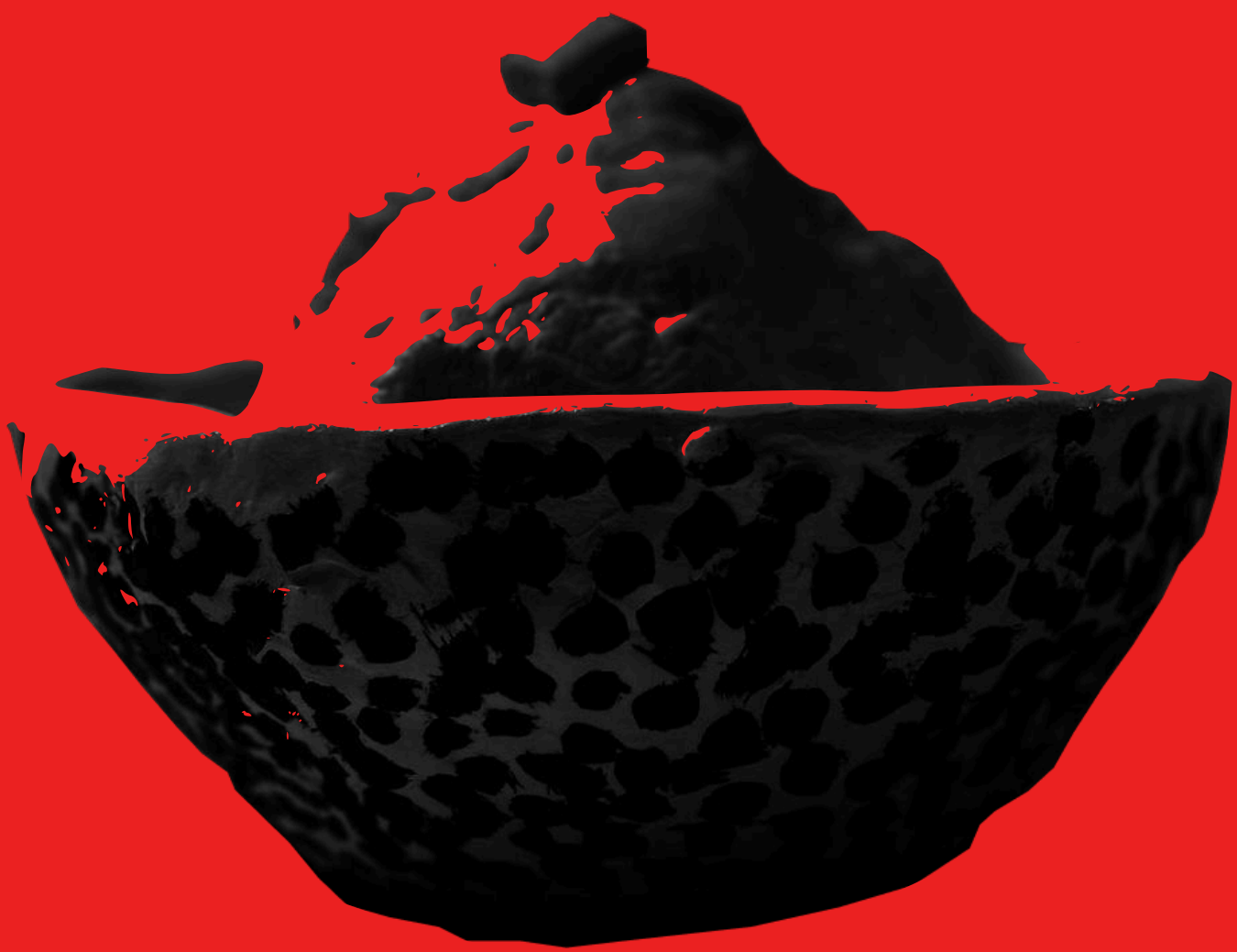
[WATCH THE VIDEO HERE!](#)



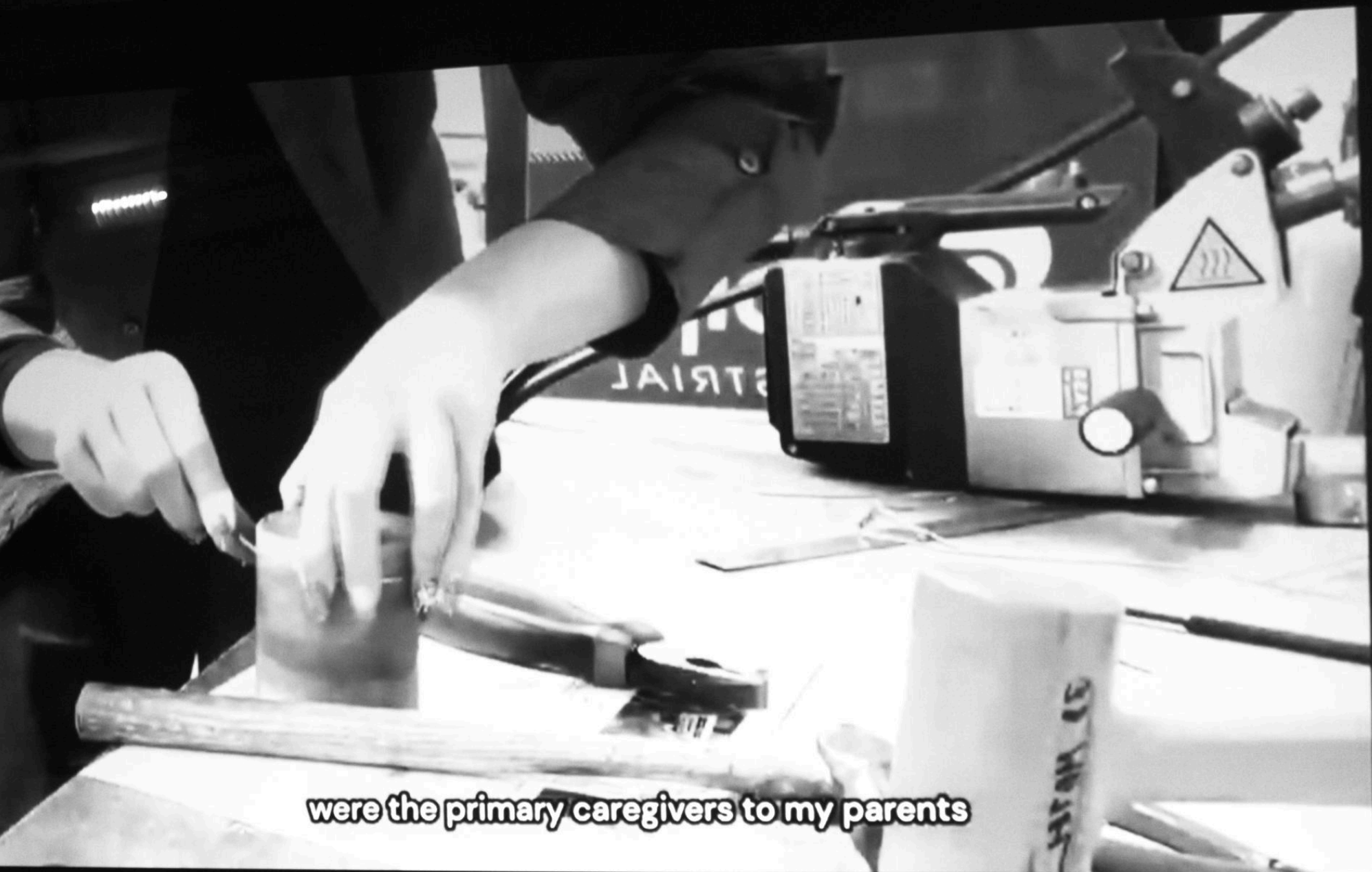








86 REFLECTION



Reflections

This project was an exploration of care—how it lingers in objects, memories, and the spaces between us. Working across disciplines, we learned from one another, challenged our assumptions, and built something tangible from shared experiences. The exhibition was not just about the objects but about the presence of those who interacted with them, making the act of remembering a collective experience. As we move forward, we take with us the value of storytelling, the power of making, and the understanding that care is not just something we give or receive—it is something we carry with us, reshaped over time.

ALUA ZHAMBULOVA
CAE MCLAUGHLIN
SAUMYA SHUKLA
SHRADDHA SUNIL